

AURORA® wind inverter

power-one®
Changing the Shape of Power

GENERAL SPECIFICATIONS

PVI-3600-OUTD-UK-F-W

PVI-3600-OUTD-US-F-W

PVI-3600-OUTD-IT-F-W

PVI-3600-OUTD-ES-F-W

AURORA® BENEFITS

- PMG (Permanent Magnet Generator) Power Curve implemented in high speed MPPT
- IP65 (NEMA 4X)—The completely sealed, rugged unit can withstand the harshest environmental conditions
- High speed MPPT for real time power tracking and improved energy harvesting
- Compact size and high power density: 3600W of output power in a box just 420mm x 326mm x 141mm (16.5in x 12.8in x 5.55in)
- Front heatsink keeps the unit cleaner and more efficient over time
- Transformerless operation for highest efficiency—up to 96%
- Reverse polarity protection minimizes chance of damage due to incorrect wiring, only if used in conjunction with Aurora PVI-WIND-INTERFACE BOX.
- High overload capability—works up to 3600W under most ambient conditions
- True Sine Wave Output
- Anti-islanding Protection
- Certified grid connected operation according to the international standards
- LCD on the front to monitor the main parameters and display kW and kWh
- Wind interface box is optional

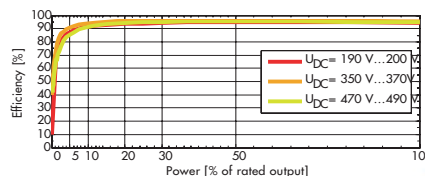
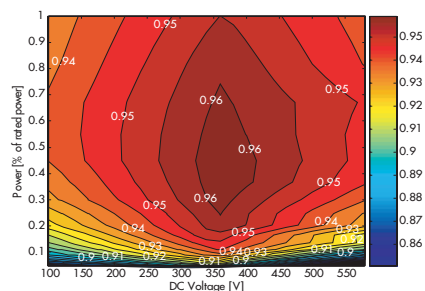
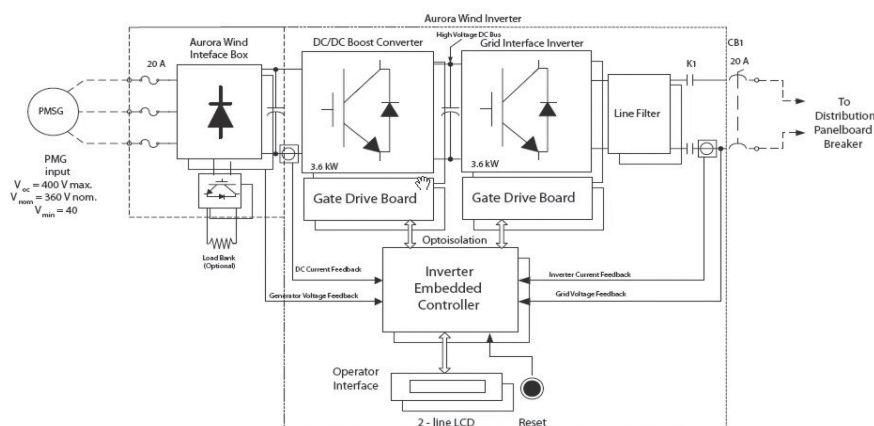


**Optional
Wind Interface Box**

HIGH PERFORMANCE REDEFINED

Power-One offers our Aurora PVI-3600 Outdoor Wind Inverter that features revolutionary switching technology. Our Aurora wind inverter includes state-of-the-art silicon power devices that help reduce switching losses. Power devices include power MOS-FET's and IGBT's. Robust and reliable, Aurora was designed to last up to 25 years, and features large derating criteria on all critical components. It delivers true maximum output power on a continuous basis. With this design concept we achieve peak efficiencies of over 96%. Total current harmonic distortion, on the other hand, is typically less than 2% through the use of high-frequency switching techniques. Exclusive to Aurora, is its power curve in software that optimizes the wind turbine's output.

BLOCK DIAGRAM AND TYPICAL EFFICIENCY



CHARACTERISTICS	PVI-3600-OUTD-UK-F-W	PVI-3600-OUTD-IT-F-W	PVI-3600-OUTD-US-F-W	PVI-3600-OUTD-ES-F-W
Power Rating Ac [W]	3600	3600	3600	3600
Absolute Max Voltage range [Vdc]	0 to 600	0 to 600	0 to 600	0 to 600
Max. Power Tracking Window range [Vdc]	50-580 (360 nominal)	50-580 (360 nominal)	50-580 (360 nominal)	50-580 (360 nominal)
Power Curve	Manufacturer special	Manufacturer special	Manufacturer special	Manufacturer special
Nominal AC Frequency [Hz]	50	50	60	50
Line Power Factor	1	1	1	1
Maximum AC Line Current [Arms]	16	16	16	16
AC Current Distortion [%]	<2.5% THD at rated power with sinewave voltage	<2.5% THD at rated power with sinewave voltage	<2.5% THD at rated power with sinewave voltage	<2.5% THD at rated power with sinewave voltage
Max Efficiency [%]	96 (Euro 95)	96 (Euro 95)	96 (Euro 95)	96 (Euro 95)
Tare Losses [mW]	<200	<200	<200	<200
Operating Ambient Temperature [°C]	-25 to +60	-25 to +60	-25 to +60	-25 to +60
Enclosure Environmental Rating	IP65 / NEMA 4 X	IP65 / NEMA 4 X	IP65 / NEMA 4 X	IP65 / NEMA 4 X
Relative Humidity	0-100% condensing	0-100% condensing	0-100% condensing	0-100% condensing
Elevation	Derated above 6,600ft (2000m)	Derated above 6,600ft (2000m)	Derated above 6,600ft (2000m)	Derated above 6,600ft (2000m)
Audible Noise [dBA]	< 40	< 40	< 40	< 40
Size (height x width x depth) [mm]	420mm x 326mm x 141mm (16.5in x 12.8in x 5.55in)	420mm x 326mm x 141mm (16.5in x 12.8in x 5.55in)	420mm x 326mm x 141mm (16.5in x 12.8in x 5.55in)	420mm x 326mm x 141mm (16.5in x 12.8in x 5.55in)
Weight [kg]	13,5	13,5	13,5	13,5

MODEL SUMMARY

Model Number	Power
PVI-3600-OUTD-UK-F-W	3600W
PVI-3600-OUTD-US-F-W	3600W
PVI-3600-OUTD-IT-F-W	3600W
PVI-3600-OUTD-ES-F-W	3600W

OPTION LIST

Options Suffix	Description
-SC	Screw Terminal Blocks

SMART CONTROLS

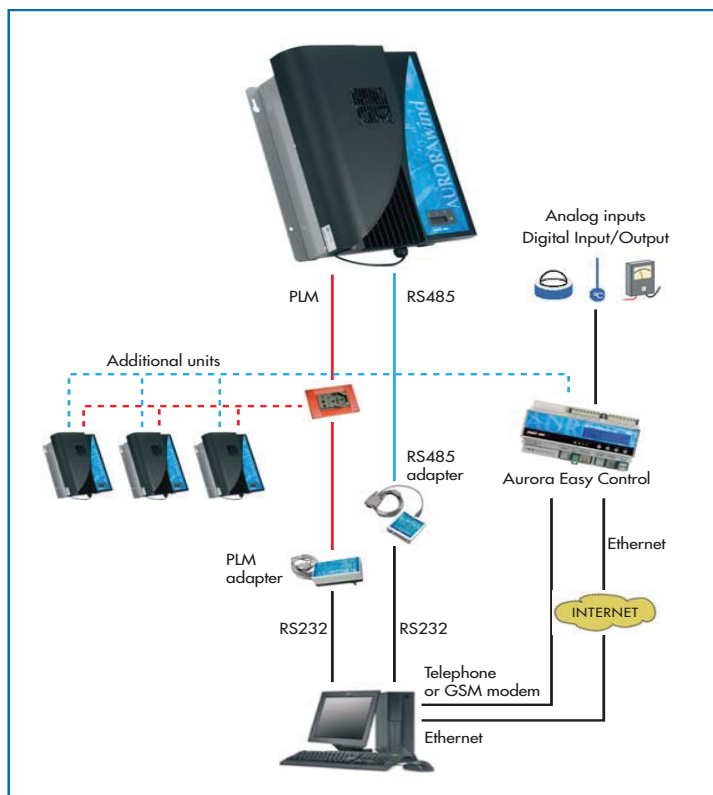
Aurora controls are DSP (Digital Signal Processor) based with sophisticated control and self-diagnostics algorithms. An LCD shows the main operational parameters. Three LED's indicate the operating status.

BEST IN CLASS COMMUNICATION CAPABILITIES

Aurora features an integrated RS485 Communication link. An RS485 to RS232 converter (optional) is available to monitor the unit.

STANDARDS AND CODES

Aurora inverters comply with standards set for grid-tied operation, safety and electromagnetic compatibility including: CE Certification, CSA- C22.2 N.107.1-01, UL1741, CLEAR SKIES G83/1, CEI 11-20 IV ed, DK 5940, IEC 61683, IEC 61727, EN 50081, EN50082, EN61000.



Rev. 1.2 - 19/03/07 - Aurora is a trademark by Power-One - Product is subject to technical improvements

Europa
Power-One Italy S.p.a.
Via S. Giorgio, 642
52028 Terranuova Bracciolini, Arezzo, Italy
Phone: (+39) 055 9195 1
Fax: (+39) 055 9198 185
aesales-eu@power-one.com

North America
Power-One Inc.
740 Calle Plano
Camarillo, California - 93012-8583
aesales-us@power-one.com

www.power-one.com



MAGNETEK
ALTERNATIVE ENERGY

N50 W13605 Overview Drive
Menomonee Falls, WI 53051
p 866.381.2035
f 262.790.4142

Magnetek (UK) Ltd.
20 Drake Mews, Crownhill
Milton Keynes, Buck MK8 0ER UK
p +44(0) 1908 261427
f +44(0) 1908 261674

www.alternative-energies.com